

SOPHIA

Estelia

KAKKANAD

PROJECT ESTELIA

A comfortable nest for your family right in the city, that is what Sophia Estelia offers. Situated in the bustling IT valley of Kakkanad, Sophia Estelia is a perfect choice for those whose lives revolve around the city and yet seek the comforts of a villa that offers a scenic view of the surrounding locales.

These residential villas are built on an elevated landscape that is both beautiful and offers practicality in terms of easy access to all major amenities and locations in Cochin and free from the hassles and danger of waterlogging and flooding. Sophia Estelia epitomizes what true community living should be. The villas at Sophia Estelia are of 3 and 4 BHK categories that have a floor area of 1624 and 1763 square feet respectively. The 4 BHK consist of cellar, ground floor and first floor.

Amenities

Elevated plots offering protection from water logging and flooding. Gated community living experience offering safety and a feeling of harmony. Close proximity to prominent educational institutions like Bharata Mata College located 1.9 km away. The bustling and swanky IT hub Infopark is situated a mere 4 kilometers away. Major hospitals like Sunrise Hospital and Rajagiri Hospital are easily accessible.



SOPHIA

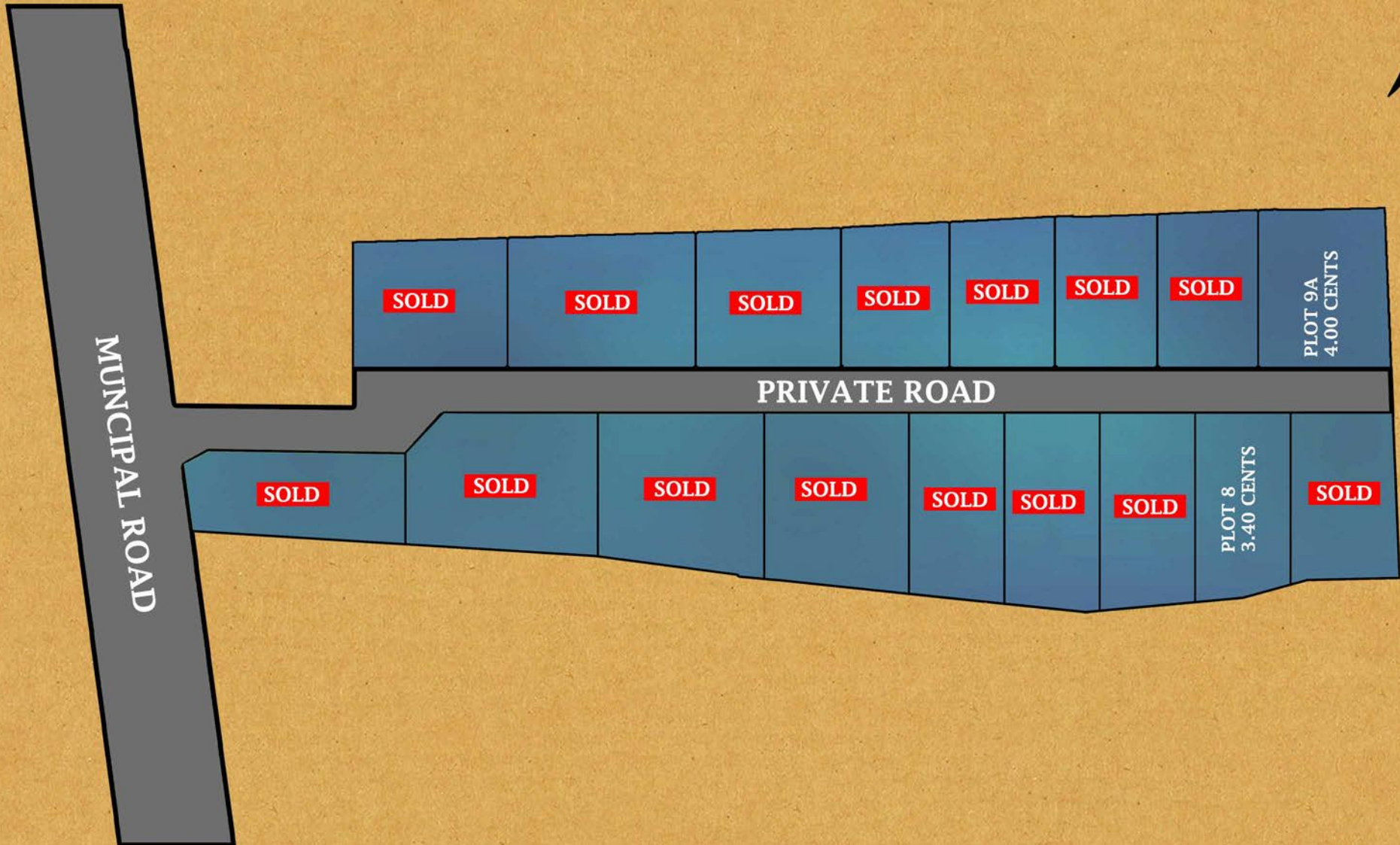
Estelia

KAKKANAD

Space for a perfect
WORK-LIFE-BALANCE

Ready to Occupy 3 & 4 BHK Villas
Semi Furnished
Gated Community
Near Infopark

SITE PLAN

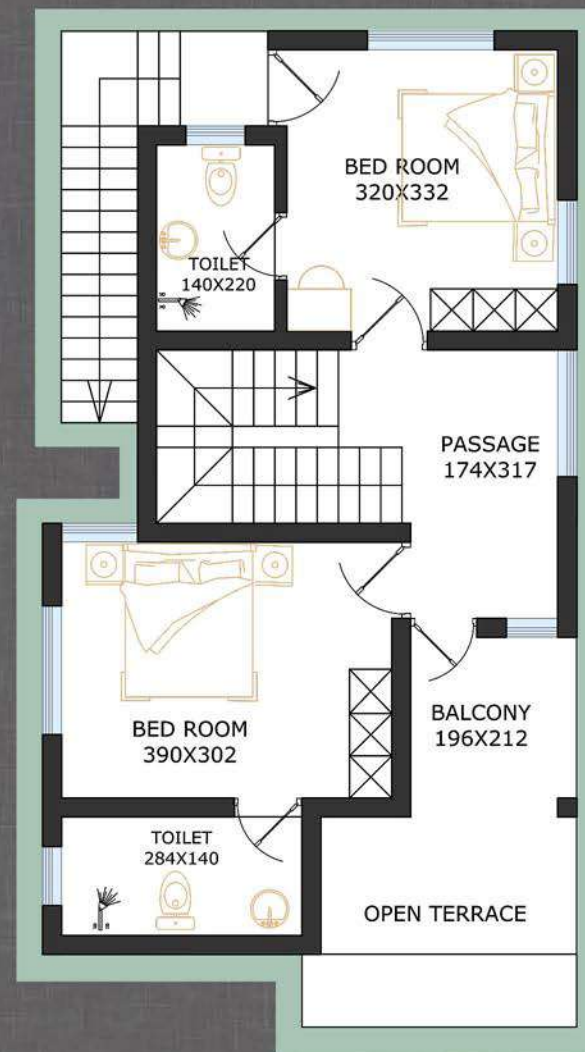




BASEMENT FLOOR - 317 SQ FT

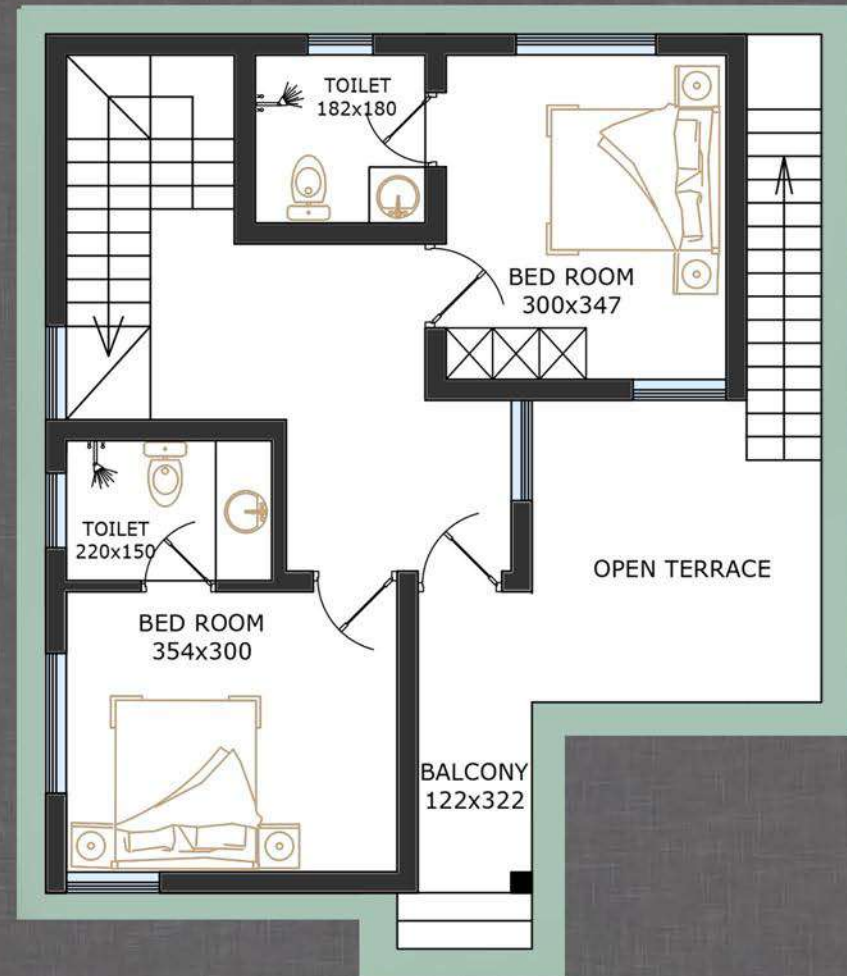
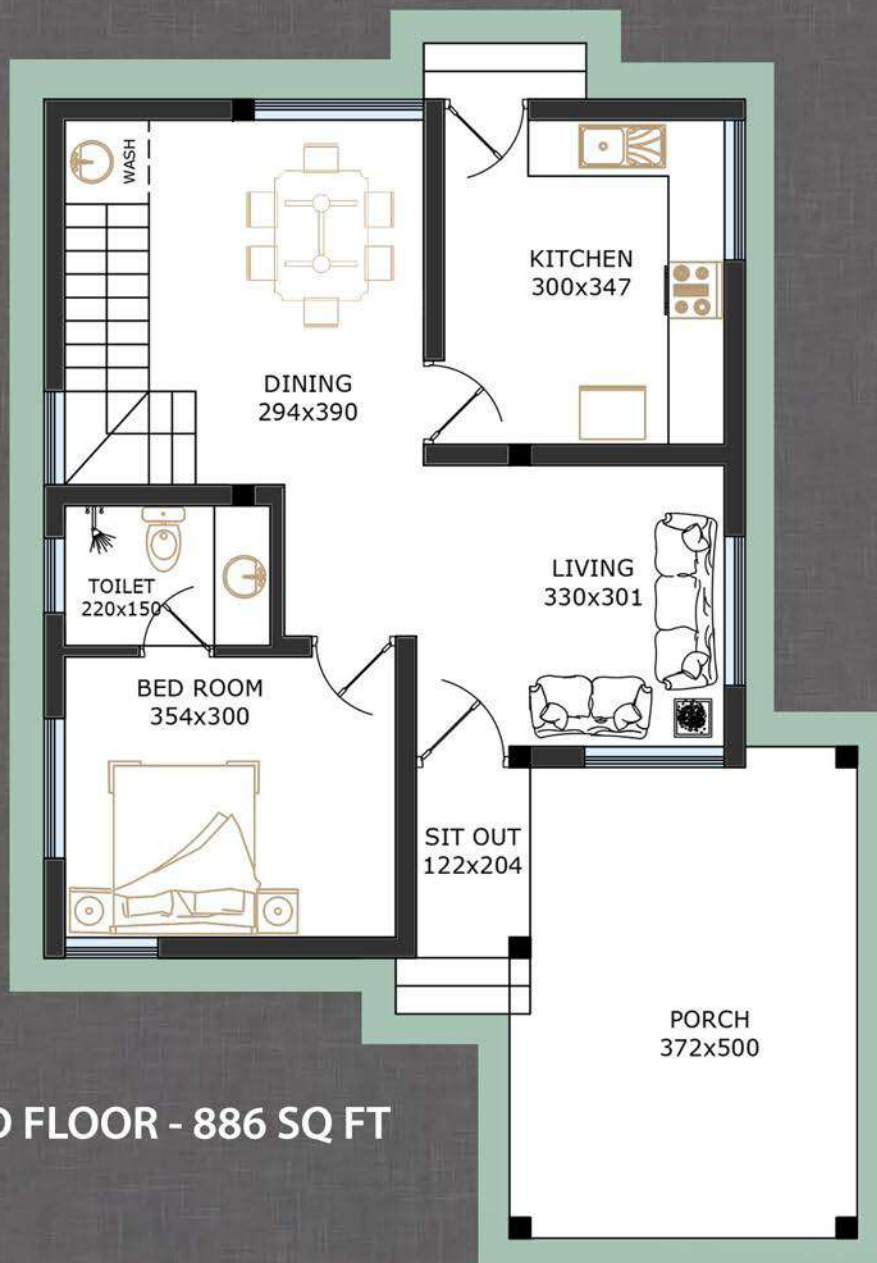


GROUND FLOOR - 848 SQ FT



FIRST FLOOR - 597 SQ FT

SOPHIA
Estelia
 KAKKANAD
VILLA 8 - 3.4 CENT, 1762 SQ FT



SOPHIA
Estelia
 KAKKANAD
 VILLA 9A - 4 CENT, 1624 SQ FT







sophiabuilders.com

7994646211
8907628037